

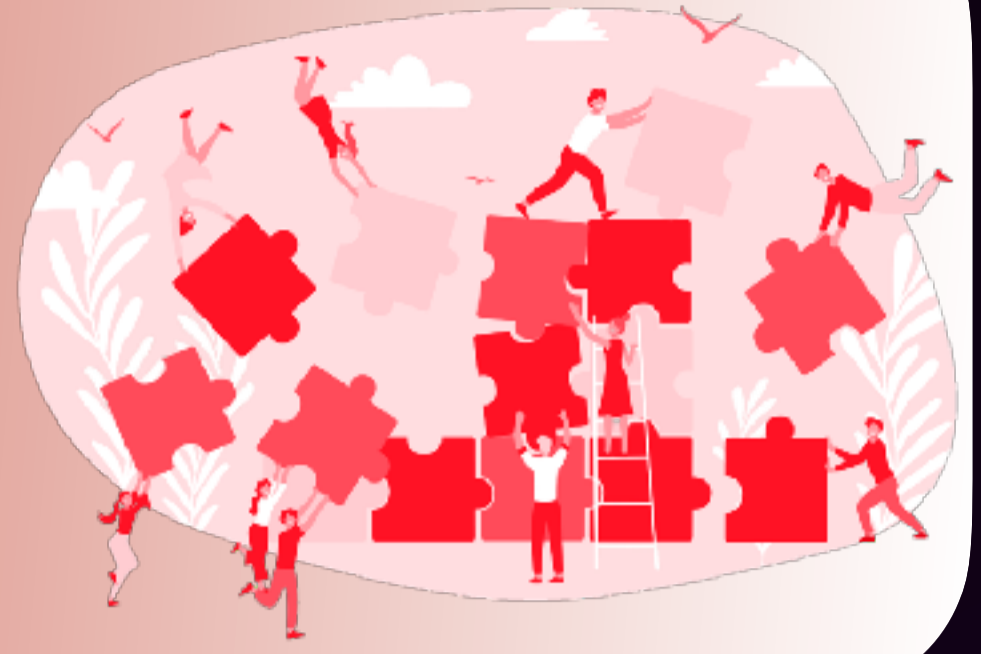
THE 5 KEY CHALLENGES

facing governments when implementing the European Union's Entry/Exit System

1

STAKEHOLDER COLLABORATION

While much of the work will be led by the Ministry of Interior or National Border Guard, a successful on-time implementation demands collaboration among multiple stakeholders, including other government departments, port and transport operators, and technology providers.



2

OPERATING PROCEDURES

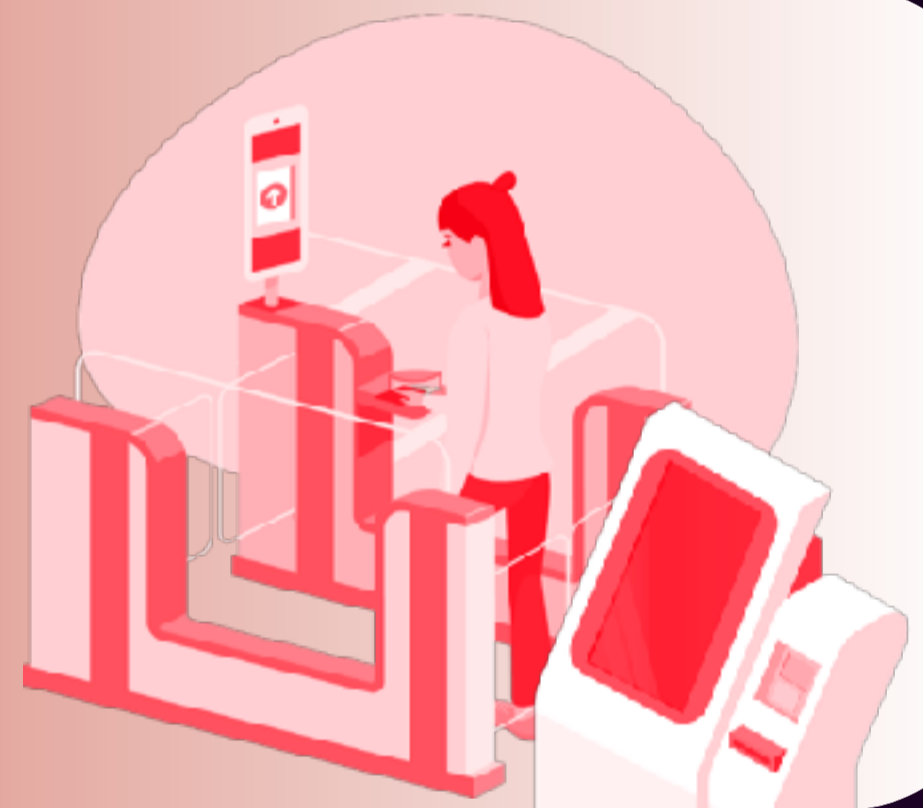
Procedures for Third Country Nationals (TCNs) need to be redesigned. Arriving TCNs will be registered and key data captured, together with the date/time/place of the border crossing. This will create new ways of working for capturing and analyzing passenger data.



3

NEW TOOLS

In addition to building new national interfaces and ensuring existing systems are ready, new equipment and tools – such as self-service kiosks and mobile devices – will be needed at international ports, train stations, and airports to ensure compliance across all modes of transport.



4

STAFFING SCHEDULES

EES will place additional demands on staff working at the border. Training will be required to use new systems and adopt new procedures. And changes in workload will mean schedules need to be re-examined to ensure there are always sufficient resources at the border to efficiently process all travelers.



5

FUTURE PROOFING

As these new EES capabilities come online, it will be vital to ensure they are future-proofed and aligned with other national and EU initiatives which aim to deliver safe, secure, and seamless traveler experiences at the border.



augmentiq works internationally with government and industry to develop strategies, drive transformation, build advocacy and enhance operational performance to create powerful capabilities in border and transportation security. info@augmentiq.com

